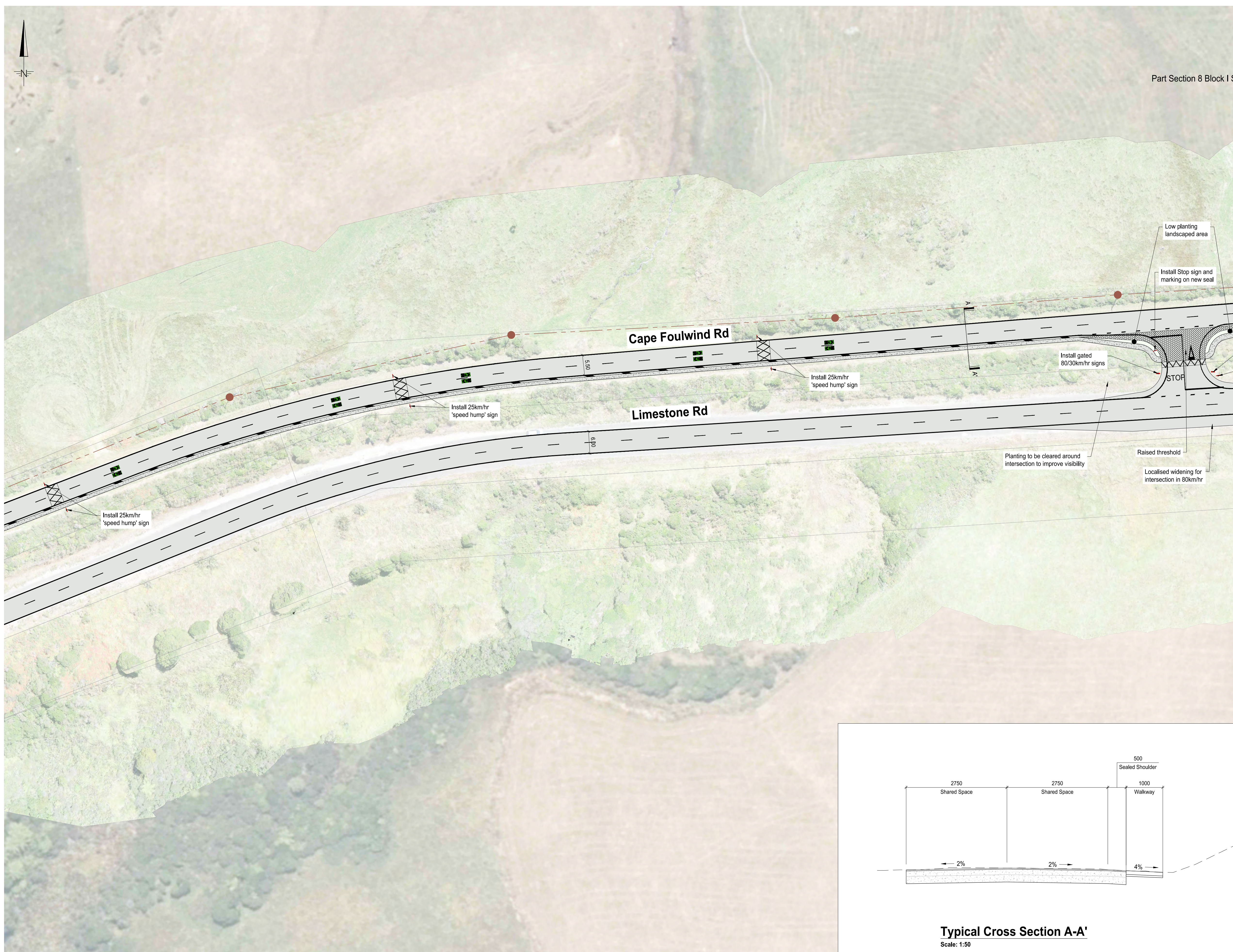
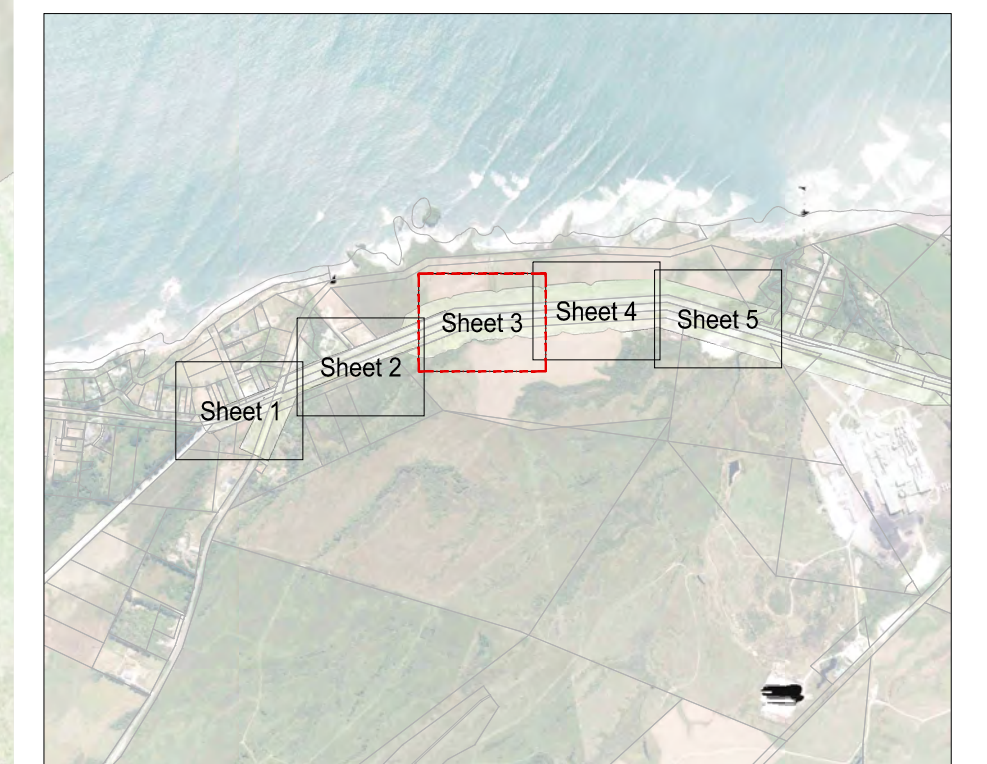


Rev.	Date	Reason	Approved
P1	DDMMYY	Issued for ...	XX



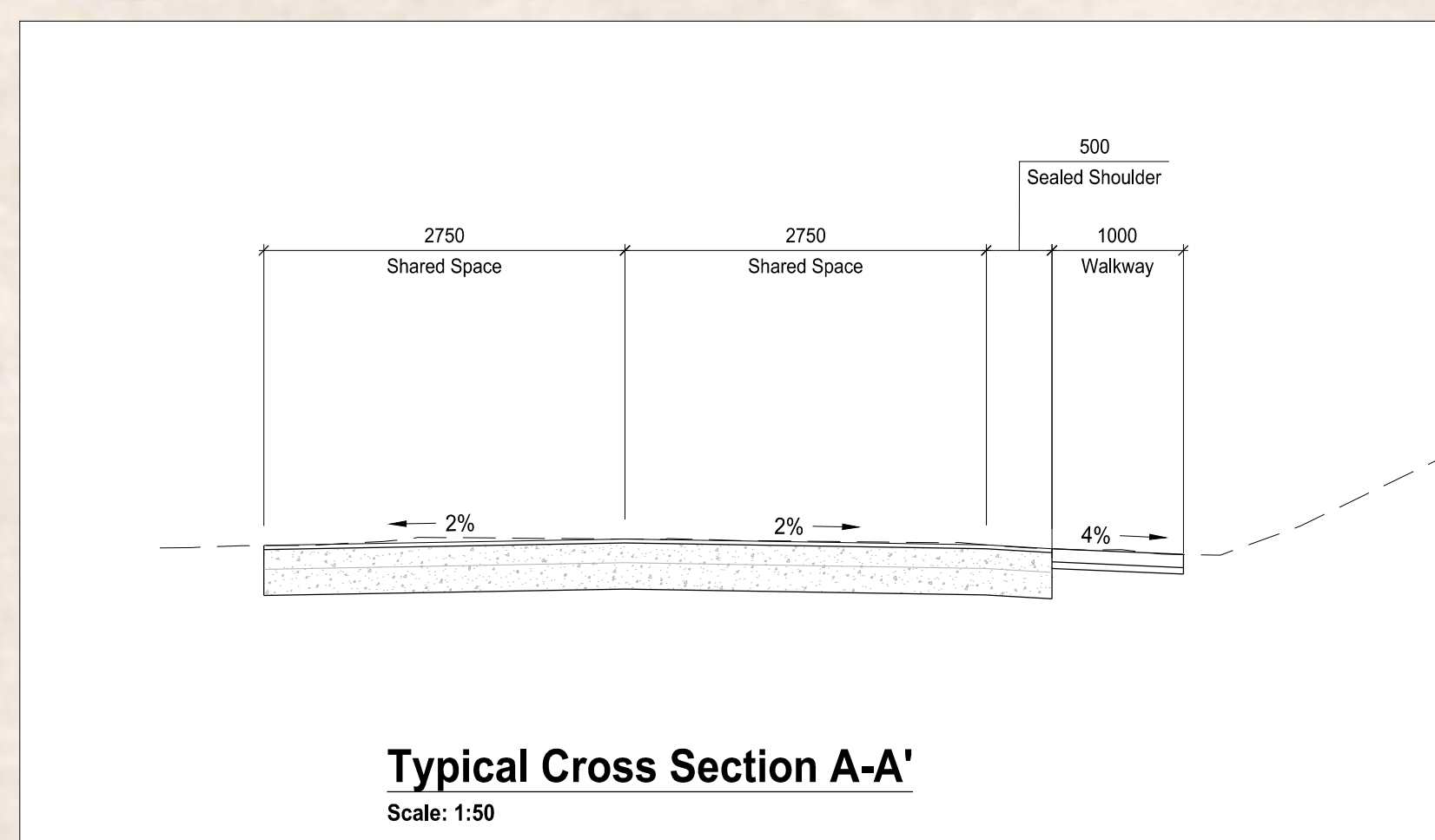
Part Section 8 Block 1 S

PRELIMINARY ISSUE



LOCATION PLAN
Scale 1:20,000 m

- GENERAL NOTES:**
- This drawing shall only be reproduced in full with approval from a Davis Ogilvie engineer.
 - Contractor to locate all existing services & verify all dimensions before commencing works.
 - Contractor is to have an approved Environmental Management Plan (EMP) and a Construction Traffic Management Plan (CTMP) from Buller District Council prior to any works commence on site.
 - Plans are to be read in conjunction with the Specification, Schedule of Prices and all relevant NZ Standards. Any conflicts are to be brought to the attention of the engineer prior to works proceeding. Engineer to advise contractor accordingly.
 - Prior to any works commencing, contractor is to engage a registered professional surveyor and/or licensed cadastral surveyor to supervise all set out.
 - Set out is not to be scaled off the plans. The engineer will provide electronic data for the contractor. Any variations are to be approved by the engineer.
 - All plan dimensions are in m. All detail dimensions are in mm.
 - All levels are in terms of the Lyttelton Vertical Datum 1937 (January 2016).
- DRAWING NOTES:**
- All earthworks are to be carried out in accordance with NZS. 4431:2022 'Engineered fill construction for lightweight structures', NZS 4404:2010 Section 2 Earthworks and Geotechnical Requirements, and Davis Ogilvie's Specification & Earthworks Methodology.
 - At all times cut & fills shall be maintained with adequate falls and drainage to minimise any infiltration of water and to allow ready runoff to ensure no ponding.
 - All drainage work is to be carried out in accordance with NZS 4404:2010 part 4 Stormwater & Davis Ogilvie's Specification.
 - All services such as power, telecom and water are to pass over all sewer and stormwater pipes where they cross unless stated otherwise.
 - Class of pipes as follows:
DN 100 - DN 375 uPVC SN16
DN 450 - DN 900 RCCRJ Concrete Class 4
(Unless noted otherwise).
 - All uPVC pipes are to have min 0.6 m cover in roading areas and 0.75 m cover for construction traffic unless stated otherwise.
 - All roading works are to be carried out in accordance with NZS 4404:2010 Part 3 Roads, Davis Ogilvie's Specification & all relevant NZTA specification.
 - All landscaping works are to be carried out in accordance with NZS 4404:2010 Part 7 Landscape. All batters are to be grassed unless otherwise labeled. All new landscaping to be approved by Buller District Council.



CAD ref: 43493.Civil_Roading-Option 3C